

CONTINUING EDUCATION

SPRING 2024



TOWNSHIP HIGH SCHOOL DISTRICT 211
UNITED STATES DEPARTMENT OF EDUCATION BLUE RIBBON SCHOOLS OF EXCELLENCE

James B. Conant • William Fremd • Hoffman Estates • Palatine • Schaumburg

ALSO INSIDE

- Hoffman Estates Celebrates Golden Anniversary
- Hundreds Attend First Generation College Event
- Benefiting our Students with a Donation of \$75,000



“

”

Lisa Small

Continuing Education Administrators

Lisa Small, Superintendent

Jacquese Gilbert, Director of Summer School and Community Outreach

Continuing Education Building Administrators

Amy Friel – Palatine High School

Mary Pat Krones – Fremd High School

Patrick Abraham/Jonny Satcher – Conant High School

Mission Statement

“Township High School District 211 serves the needs of our diverse community by providing relevant and rigorous learning experiences, opportunities for involvement and strong support systems that empower all students to reach their full potential.”

Board Of Education

Anna Klimkowicz, President

Steven Rosenblum, Vice President

Kimberly Cavill, Secretary

Michelle Barron

Curtis Bradley

Peter Dombrowski

Tim Mc Gowan



SCANNER
QR CODE

Continuing Education 2024 Spring Calendar

Monday, January 15	Martin Luther King Jr. Day	All Schools Closed
Saturday, January 20	Cheer Invite	Fremd High School - No Classes
Saturday, February 3	Speech Tournament	Fremd High School - No Classes
Monday, February 19	President's Day	All Schools Closed
Saturday, March 2	Operation Snowball	Fremd High School - No Classes
Monday, March 25 - Friday, March 29	Spring Break	All Schools Closed
Tuesday, April 9 - Thursday, April 11	State Testing	All Schools - No Classes
Thursday, April 18	Academic Awards Night	Palatine High School - No Classes
Monday, April 22	Honors Convocation	Schaumburg High School - No Classes
Tuesday, April 23	The Future Begins	Palatine High School - No Classes
Saturday, April 27	Speech Tournament	Fremd High School - No Classes
Monday, April 29	Honors Convocation	Conant High School - No Classes
Thursday, May 9	Freshman Activity Athletic Fair	Conant High School - No Classes

Changes in Catalog

It is sometimes necessary to make changes in the location, times, or dates of courses. We will make every effort to advise registered students of the changes. We appreciate your patience and understanding in such matters.

Cover Art © Melica / Adobe Stock

Jewelry making



(Continued)

General Information

Course Registration

Course registration begins Tuesday, January 9, 2024. See "Registration Instructions" for details if needed.

Course Confirmation

The Continuing Education office will send an email confirmation upon registration.

Tuition and Refund Policy

The High School District 211 Continuing Education Program plans its expenses and bases its budget upon full collection of tuition and fees. All fees are payable in advance and will not be refunded unless the class is cancelled or a registrant withdraws in writing prior to the official start date of the class. ***Only refund requests received prior to the first class meeting will be honored unless class has been cancelled by the Continuing Education Office. We will not honor requests for refunds for a class that has begun. Students who attend one or more meetings of a class will not be eligible for a refund.***

Refund requests must be in writing and directed to the Continuing Education Office at the High School District 211 Administration Building, 1750 S. Roselle Road, Palatine, IL 60067-7336. Course descriptions are designed to provide the prospective student with as much information about the class as possible. Specific questions about classes should be directed to the Continuing Education Office at (847) 755-6820. In-person refund requests may be made during the regular work hours at the Continuing Education Office. Telephone refund requests will not be honored.

Emergency Information

In the event that it is necessary to cancel evening classes because of inclement weather or an emergency situation, information will be available on the District 211 website (adc.d211.org) or via the news media. Day school cancellation **DOES NOT** automatically mean night school is cancelled.



Suggestions/Comments

District 211 Continuing Education is constantly striving to provide you with the highest quality classes and programs. We are confident that you will be pleased with these classes and our goal is to continue to provide quality services. Your suggestions, comments, or ideas for improvement are appreciated in order to help us do the best job possible.



Special Needs/ADA

Continuing Education does not discriminate against any person on the basis of a disabling condition. To request disability accommodations, please contact the assistant principal's office at the appropriate school. For individuals who are deaf or hard of hearing, please access the following TTD/TTY telephone number: (847) 755-6654.

School Codes

The majority of Continuing Education classes are held in District 211 High School buildings. The school codes and addresses are listed below. A map also is located below.

P.H.S. – Palatine High School, 1111 N. Rohlwing Road, Palatine

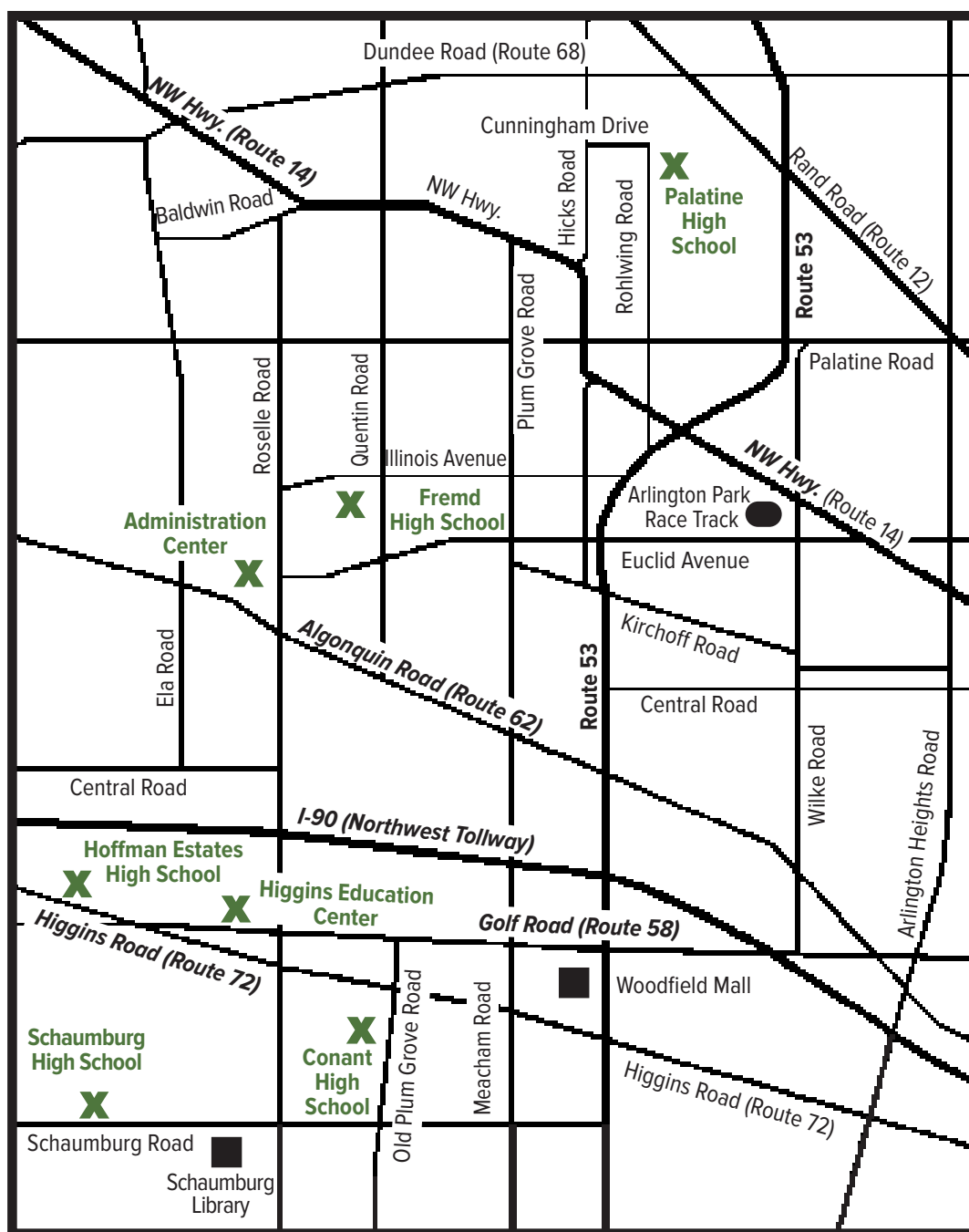
F.H.S. – William Fremd High School, 1000 S. Quentin Road, Palatine

C.H.S. – James B. Conant High School, 700 E. Cougar Trail, Hoffman Estates

S.H.S. – Schaumburg High School, 1100 W. Schaumburg Road, Schaumburg

H.E.H.S. – Hoffman Estates High School, 1100 W. Higgins Road, Hoffman Estates

H.E.C. – Higgins Education Center, 1030 W. Higgins Road, Hoffman Estates



Registration Instructions

- When?** Tuesday, January 9, 2024, at 9:00 a.m.
Registration will be accepted until the start of the class or until class reaches its capacity. Instructor approval is necessary for registration to a class that is already in session.
- Who?** Adults, age 18 and over may enroll.
- How?** Now FOUR Easy Ways to Register!

1. **ONLINE** – Visit <https://campus.d211.org/campus/store/township> and follow the instructions to the secure registration service.
2. **BY FAX** – Fill in the form located on the following page and fax it with your credit card information to (847) 755-6867.
3. **BY MAIL** – Fill in the form located on the following page and mail it to: Continuing Education Office, 1750 S. Roselle Road, Palatine, IL 60067-7336. Check or credit card only – DO NOT SEND CASH IN THE MAIL.
4. **IN-PERSON** – Those who wish to register in-person may do so at the G.A. McElroy Administration Center, 1750 S. Roselle Road in Palatine, Monday through Friday, 9:00 a.m. until 3:30 p.m.



Four Easy Ways to Pay

1. **CREDIT CARD** – Complete your VISA, MASTERCARD, AMERICAN EXPRESS, or DISCOVER number, expiration date, and security code on the registration form or online through Infinite Campus.
2. **DEBIT CARD** – Complete your VISA, MASTERCARD, AMERICAN EXPRESS, or DISCOVER number, expiration date, and security code on the registration form or online through Infinite Campus.
3. **E-CHECK** – Using your checking account.
4. **E-SAVINGS** – Using your savings account.

The Continuing Education Office is located in the Township High School District 211 G.A. McElroy Administration Center, 1750 S. Roselle Road in Palatine (just north of the intersection of Roselle and Algonquin Roads).

Gold Cards (Senior Citizen Discount)

Gold Card holders may register for many classes at a substantial discount. The Gold Card fee is listed in the course description. Write your Gold Card number in the space provided on the registration form or online.

To obtain a Gold Card, residents of District 211 who are 62 years of age or older must apply in-person at the District 211 Office (1750 S. Roselle Road in Palatine) Monday through Friday, 9:00 a.m. until 3:30 p.m., year-round.

Township High School District 211 – Continuing Education

Telephone: (847) 755-6820

Fax: (847) 755-6867

1750 South Roselle Road, Palatine, Illinois 60067-7336

(Please Print)

Name:

(Last)

(First)

Address:

(Street)

(City)

(Zip Code)

Email (REQUIRED):

Home

Work

District 211

Phone:

Phone:

Gold Card No.:

Course Number	Subject	Office Use Only	Location	Day	Fee

☐ **VISA**

☐ **MasterCard**

☐ **Discover**

☐ **AmEx**

☐ **Check**

☐ **Cash**

**Credit
Card. #**

**Exp.
Date**

**Security
Code**

I do hereby stipulate and agree to indemnify and forever hold harmless High School District 211 against any and all claims arising out of my occupancy of the school premises of the school district.

Signature (REQUIRED)

Date

Township High School District 211 – Continuing Education

Telephone: (847) 755-6820

Fax: (847) 755-6867

1750 South Roselle Road, Palatine, Illinois 60067-7336

(Please Print)

Name:

(Last)

(First)

Address:

(Street)

(City)

(Zip Code)

Email (REQUIRED):

Home

Work

District 211

Phone:

Phone:

Gold Card No.:

Course Number	Subject	Office Use Only	Location	Day	Fee

☐ **VISA**

☐ **MasterCard**

☐ **Discover**

☐ **AmEx**

☐ **Check**

☐ **Cash**

**Credit
Card. #**

**Exp.
Date**

**Security
Code**

I do hereby stipulate and agree to indemnify and forever hold harmless High School District 211 against any and all claims arising out of my occupancy of the school premises of the school district.

Signature (REQUIRED)

Date

No Receipt Will Be Mailed — Go to the First Class



Learning to Draw

Be creative and have fun while learning to draw flowers, animals and still life with pencils and pastels. All students will receive materials for the first class; you will need to purchase a few extra supplies for the remainder of the session. **Don't Delay, Sign Up Today!**

Course #	Day	Dates	Time	Loc	Fee	Teacher	Max
A150 - 01	Tu	3/5-5/14 (8 Weeks)	7:00 - 9:30 p.m.	P.H.S. Rm. 252	\$110 \$103 (Gold Card)	T. Abrams	Max 13



Creative 3D Acrylic Painting

Have fun while creating a unique and exciting 3D acrylic painting. Some painting experience is helpful, but not necessary. All students will receive materials for the first class; you will need to purchase a few extra supplies for the remainder of the session. **Please bring a small covered jar to the first class.** Tobi Abrams has developed these new and exciting techniques on her own and will teach you these techniques for making your artwork look 3D.

Course #	Day	Dates	Time	Loc	Fee	Teacher	Max
A150 - 02	Th	3/7-5/16 (8 Weeks)	7:00 - 9:30 p.m.	P.H.S. Rm. 252	\$135 \$125 (Gold Card)	T. Abrams	Max 15

Arts & Crafts

Beginning Jewelry (Metalsmithing)

Students will learn the basic techniques of metalsmithing. Students will work with brass and copper, learn sawing and piercing, filing, sanding, soldering, and finishing techniques to make a professional piece of jewelry. Students will make five or six pieces. **You will need to furnish your own materials and tools; list will be provided at the first day of class.**

Course #	Day	Dates	Time	Loc	Fee	Teacher	Max
A170 - 01	Tu	1/23 - 4/23 (12 Weeks)	7:00 - 10:00 p.m.	F.H.S. Rm. 4	\$145 \$90 (Gold Card)	L. Conrad	Max 12

Intermediate Jewelry (Metalsmithing)

As a continuation of the beginning class, students will build upon the techniques and skills that they learned in that class. Students also will learn new techniques including lost wax casting and will start to implement their own designs from conception to completion in metal as well as wax to complete a professional piece of jewelry. The teacher will demonstrate various techniques geared towards interests of the class. This is a class that can be taken again while still learning new techniques.

Materials and most tools for personal projects must be furnished by the student.

Course #	Day	Dates	Time	Loc	Fee	Teacher	Max
A175 - 01	W	1/24 - 4/24 (12 Weeks)	7:00 - 10:00 p.m.	F.H.S. Rm. 4	\$145 \$90 (Gold Card)	L. Conrad	Max 15

Creative Digital Photography

This is a lecture-based class for the person with a single lens reflex style digital camera or planning on purchasing one. The course will cover the basics of photography such as composition, lens selection, filters, exposure, depth-of-field and basic flash photography. There will be some basic hands-on photography in class and assignments to practice techniques discussed in class. The processing of the digital image from the camera to the computer, to the print will also be discussed including subjects such as file formats, white balance, sharpening, brightness contrast and saturation.

Course #	Day	Dates	Time	Loc	Fee	Teacher	Max
A214 - 01	W	1/24 - 3/6 (7 Weeks)	7:00 - 9:30 p.m.	F.H.S. Rm. 3	\$89 \$65 (Gold Card)	J. Hojnacki	Max 10



Beginning Knitting

Learning a new craft is fun, when you have help! Learn to knit, purl, cast on, cast off, and fringe. The project is a scarf, this goes quick on large needles. **A supply list will be given upon registration.**

Course #	Day	Dates	Time	Loc	Fee	Teacher	Max
A430-01	W	1/24 - 2/7 (3 Weeks)	7:00 - 9:00 p.m.	C.H.S. Rm. 109	\$69 \$65 (Gold Card)	J. Webster	Max 8



Beginner/Intermediate Knit Cowl

This cowl is a lovely cowl to wear to keep your neck warm, and feel comfortable. You won't lose it like a scarf, as it circles around your neck. Prerequisite is that you are very comfortable with your knowledge of knitting and purling already as this class is not a beginning knit class. You will learn how to knit in the round on circular needles, as well as making increases. This is a fun quick knit!

A supply list will be given upon registration. Note, you must have the correct size circular knitting needle in order to make this.

Course #	Day	Dates	Time	Loc	Fee	Teacher	Max
A431-01	W	2/21 - 3/6 (3 Weeks)	7:00 - 9:00 p.m.	C.H.S. Rm. 109	\$69 \$65 (Gold Card)	J. Webster	Max 8



Beginner Crochet Vintage Chevron or "Ripple" Lap Afghan

This vintage afghan pattern has stood the test of time. It is a very eye-catching blanket whether you are making a small baby blanket, or a small throw for someone of any age!

Make it in your favorite colors, or colors of the season, use similar colors, graduating colors, or opposite colors, and you will see how beautiful each of these choices will be. We will be using chain and single crochet stitches. You will have increases and decreases. So, if you are new to crochet, this will be easy for you. **A supply list will be given upon registration.**

Course #	Day	Dates	Time	Loc	Fee	Teacher	Max
A432-01	W	3/13 - 4/3 (3 Weeks)	7:00 - 9:00 p.m.	C.H.S. Rm. 109	\$69 \$65 (Gold Card)	J. Webster	Max 8



Beginner/Intermediate Crochet Floral Potholders

These potholders are very adorable and helpful in the kitchen. Whether the kitchen is yours, or you can make a pair to brighten up someone else's kitchen. Learn to crochet in a circle. Prerequisite is that you already have a good knowledge of your crochet stitches of chain, single and double crochet. Learn to read a pattern too! **A supply list will be given upon registration.**

A supply list will be given upon registration.

Course #	Day	Dates	Time	Loc	Fee	Teacher	Max
A433-01	W	4/17 - 5/1 (3 Weeks)	7:00 - 9:00 p.m.	C.H.S. Rm. 109	\$69 \$65 (Gold Card)	J. Webster	Max 8

Business & Finance

Financial Planning for Parents with a Special Needs Child

The Financial Planning for Parents with a Special Needs Child is a class that is useful whether your child is an adult or under 18. Within this course, parents will learn financial strategies that can be implemented now and for future support. Topics that will be covered include: 1st party trusts, ABLE account, funding options, beneficiary designations and more. Additionally, the instructor will use client case studies, and personal family experiences for handling crisis management.

Course #	Day	Dates	Time	Loc	Fee	Teacher	Max
B134 - 01	Tu	2/27 (1 Day)	6:30 - 8:00 p.m.	F.H.S. Rm. 164	\$20 \$15 (Gold Card)	V. Villers	Max 20
B134 - 02	W	3/20 (1 Day)	6:30 - 8:00 p.m.	C.H.S. Rm. 132	\$20 \$15 (Gold Card)	V. Villers	Max 20
B134 - 03	Th	4/25 (1 Day)	6:30 - 8:00 p.m.	P.H.S. Rm. 200	\$20 \$15 (Gold Card)	V. Villers	Max 20



Knit Cowl
With Jeanne Webster

CONTINUING EDUCATION SPRING 2024



Vintage Chevron Lap Afghan
With Jeanne Webster



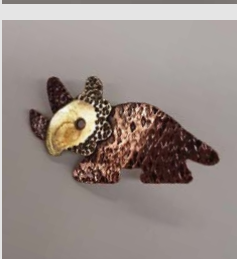
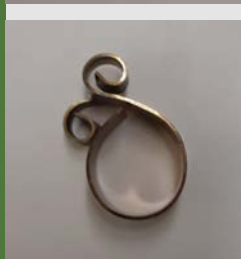
3D Acrylic Painting
by Tobi Abrams



Pastel Drawing
by Tobi Abrams



Cuff Bracelet (Medalsmithing)
With Lisa Conrad



Jewelry (Medalsmithing)
With Lisa Conrad



Crochet Floral Potholders
With Jeanne Webster

THIS PUBLICATION CONTAINS QR CODES

It's just a few easy steps to scan a QR code on your iPhone or Android mobile device.

- Open the camera app or QR code reader
- Focus the camera on the QR code by gently tapping the code
- Follow the instructions on the screen to complete the action



Wills, Trusts, Probate, Transfer Taxes and Retirement Benefits

The course will provide an overview of structure and function of wills and trusts, including duties of executors, guardians, and trustees. The operation of the probate process will be discussed. The course will include a brief analysis of the new estate tax act. Post-death distribution rules for retirement benefits also will be covered. If time permits, advanced medical directives for health care will be addressed.

Course #	Day	Dates	Time	Loc	Fee	Teacher	Max
B220 - 01	Tu	4/30 - 5/7 (2 Weeks)	7:00 - 9:00 p.m.	P.H.S. Rm. 216	\$29 \$15 (Gold Card)	J. Gottlieb	Max 50

Investing in Stocks

No matter what your age, you can learn how to pick stocks and manage your stock portfolio, IRA or 401k. We will show you how to set up a well-diversified stock portfolio and then how to properly manage it. You will learn the differences between making investments, speculating, and buying products. You will also learn to determine your risk tolerance. Plus, we will show you how to manage after-tax accounts in a tax efficient way. So come learn a simple, proven way to manage your assets more effectively. We can show you how to retire earlier and wealthier, or both! Instructor is a Registered Investment Advisor Rep. Materials included.

Course #	Day	Dates	Time	Loc	Fee	Teacher	Max
B495 - 01	Tu	1/30 - 2/6 (2 Weeks)	7:00 - 8:30 p.m.	P.H.S. Rm. 200	\$45 \$35 (Gold Card)	K. Nyborg	Max 30

Languages

Beginning Sign Language

This course is designed for those who are interested in learning to communicate with the hearing impaired. You will learn the alphabet, numbers, and basic sign language vocabulary. This will enable you to carry on simple conversations, understand paragraphs, and accurately produce signs at the beginning level. Textbook is not necessary.

Course #	Day	Dates	Time	Loc	Fee	Teacher	Max
L108 - 01	Tu	1/23 - 4/2 (10 Weeks)	7:00 - 9:00 p.m.	F.H.S. Rm. 144K	\$109 \$69 (Gold Card)	J. Kelly	Max 20

Spanish I

Olé! Converse in Spanish the fast and fun way, enhanced with audiovisual materials. Students will learn simplified grammar to develop reading, speaking, and writing skills for travel, personal, and professional interests. Book used is SPANISH NOW! Level 1, 8th Edition published by Barron's.

	Course #	Day	Dates	Time	Loc	Fee	Teacher	Max
NEED BOOK*	L130 - 01	Tu	1/30 - 4/30 (12 Weeks)	6:30 - 9:00 p.m.	F.H.S. Rm. 163	\$150 \$100 (Gold Card)	M. Louchios	Max 20
HAVE BOOK*	L131 - 01	Tu	1/30 - 4/30 (12 Weeks)	6:30 - 9:00 p.m.	F.H.S. Rm. 163	\$125 \$75 (Gold Card)	M. Louchios	Max 20

*Please choose the correct course code – if you do not have a current book, you must register for the full-price class.

Spanish II

This course will focus on improving conversational skills in the present tense only. To enroll, students must have studied Spanish I or have knowledge of the regular verb structure. Book used is Barron's Eighth Edition, SPANISH NOW! Level 1 (with CD).

	Course #	Day	Dates	Time	Loc	Fee	Teacher	Max
NEED BOOK*	L150 - 01	W	1/31 - 5/1 (12 Weeks)	6:30 - 9:00 p.m.	F.H.S. Rm. 163	\$150 \$100 (Gold Card)	M. Louchios	Max 20
HAVE BOOK*	L151 - 01	W	1/31 - 5/1 (12 Weeks)	6:30 - 9:00 p.m.	F.H.S. Rm. 163	\$125 \$75 (Gold Card)	M. Louchios	Max 20

*Please choose the correct course code – if you do not have a current book, you must register for the full-price class.

ESL Conversation Café

Get ready to visit a different kind of café! At this café, you will experience a unique menu filled with “appetizers” starting questions, and the “entree” a conversation from one of the appetizer's topics. One-and-a-half-hour discussions will cover a wide variety of topics – everything from hometowns and growing up, to staying healthy, and raising a family. There are three new topics every week. The main goals of this class are to **increase your confidence** in your English-speaking skills and to interact with native English speakers. You must be an ELL/ESL intermediate level (or higher) student to register for this class. See you at the café!

Course #	Day	Dates	Time	Loc	Fee	Teacher	Max
L205 - 01	Sa	2/10 - 3/16 (5 Weeks)	9:30 - 11:00 a.m.	F.H.S. PCR	\$40	J. Frost	Max 12

adc.d211.org/Adult-Continuing-Education



It is sometimes necessary to make changes in the location, times, or dates of courses. Revisions will be posted to our website.

Music & Dance

Adult Chorus

The Adult Chorus will incorporate a broad spectrum of choral music, preparing and learning pieces in a variety of different genres, while also delving into their cultural and historical aspects. Chorus members will gain knowledge of vocal mechanics, music reading, ensemble singing and current performance practices. No previous experience necessary. There will be opportunities provided for both beginner and advanced singers.

Course #	Day	Dates	Time	Loc	Fee	Teacher	Max
M130 - 01	Tu	1/23 - 4/23 (12 Weeks)	7:00 - 9:00 p.m.	H.E.H.S. Choir Rm 09	\$75	M. Schlesinger	Max 100

Tap Dancing I

Tap dancing is a great way to shape up those legs and have lots of fun. Learn the basic steps and a routine. No previous dance experience is necessary. Wear comfortable clothing and tap shoes. Have fun and get a real workout.

Course #	Day	Dates	Time	Loc	Fee	Teacher	Max
M140 - 01	W	1/24 - 4/24 (12 Weeks)	7:00 - 8:00 p.m.	C.H.S. Multi- Purpose Rm	\$59 \$33 (Gold Card)	A. Coleman	Max 20

Personal Enrichment/Development

Beginning and Intermediate Gardening

Learn how to design and grow beautiful, bold, colorful, multi-seasonal gardens that will be the envy of your neighbors. Everyone loves the taste of homegrown tomatoes. Learn the tips and techniques to grow big, bushy, healthy tomato plants that are covered in tasty, juicy, disease-free tomatoes. Included in this single session class are diagrams, drawings and numerous photographs. You will also learn how to improve the quality of your soil; purchase, plant and fertilize your plants; control weeds; and proper watering techniques. A list of easy to grow annuals and perennials that will brighten your garden all season long will be included.

Course #	Day	Date	Time	Loc	Fee	Teacher	Max
P120 - 01	Tu	3/5 (1 Day)	7:00 - 9:00 p.m.	F.H.S. Rm. 118	\$35 \$30 (Gold Card)	J. Kowalski	Max 30

Beginning Bridge Card Game

A game for all ages whether you need a refresher course from playing in college or are new to the game, this is the class for you! We will learn bidding in the 21st century. Hands will be played and discussed each night. Each student will receive a book, "Bridge at a Glance", which is included in the cost of the class.

Course #	Day	Dates	Time	Loc	Fee	Teacher	Max
P130 - 01	Tu	2/20-5/14 (10 Weeks)	7:00 - 9:00 p.m.	P.H.S. Media Center Café	\$60 \$45 (Gold Card)	L. Englbrecht	Max 20

Becoming a Career-Pathway Mentor for your Child

Do you have a college bound child? If so, this course is for you! This course aims to empower parents of college bound students with the knowledge of how to become career pathway mentor, and help their child find their ultimate career field. You will receive information on how to create goals for college planning and career pathways, graduating within a specific timeline and degree, and becoming employed in their desired field.

Course #	Day	Dates	Time	Loc	Fee	Teacher	Max
P137 - 01	M & W	2/5-2/14 (2 Weeks)	6:00 - 8:30 p.m.	C.H.S. Rm. 229/230	\$75	M. Mulligan	Max 10
P138 - 01	Tu & Th	2/6-2/15 (2 Weeks)	6:00 - 8:30 p.m.	P.H.S. Rm. 216	\$75	M. Mulligan	Max 10
P137 - 02	M & W	3/4-3/13 (2 Weeks)	6:00 - 8:30 p.m.	C.H.S. Rm. 229/230	\$75	M. Mulligan	Max 10
P138 - 02	Tu & Th	3/5-3/14 (2 Weeks)	6:00 - 8:30 p.m.	P.H.S. Rm. 216	\$75	M. Mulligan	Max 10

Beginning Genealogy

Discover your family history and find your ancestors' stories. Using a list of over 25 free websites, this class will help you start your journey. Tips on using genealogical websites more efficiently and organizing your information will be discussed. Great refresher course too.

Course #	Day	Dates	Time	Loc	Fee	Teacher	Max
P147 - 01	Tu	3/12 (1 Day)	6:30 - 8:30 p.m.	F.H.S. Rm. 119	\$19 \$15 Gold Card	J. Schattner	Max 25

A Guide to Overseas Genealogy

Crossing the pond is easier than you think. You will be shown the history of immigrant travel into the U.S. and how to find genealogical records in most European countries. A list of over 70 American and European websites and books for genealogical research.

Course #	Day	Dates	Time	Loc	Fee	Teacher	Max
P168 - 01	Tu	3/19 (1 Day)	6:30 - 8:30 p.m.	F.H.S. Rm. 119	\$19 \$15 Gold Card	J. Schattner	Max 25

Real Estate

First Time Home Buyer

Tired of renting? This class offers assistance and insights into the process of home ownership. Learn all you need to know about buying your first home: getting familiar with contracts, closing costs, inspections, down payments, appraisals, interest rates and negotiations. Get familiar with Down Payment Assistance Program and how to qualify.

Course #	Day	Dates	Time	Loc	Fee	Teacher	Max
R116 - 01	M	3/4 (1 Day)	6:30 - 8:00 p.m.	C.H.S. Rm. 228	\$15 \$10 (Gold Card)	M. Olach	Max 30
R116 - 02	Tu	5/7 (1 Day)	6:30 - 8:00 p.m.	F.H.S. Rm. 119	\$15 \$10 (Gold Card)	M. Olach	Max 30

How to Buy a Vacation Home or Retirement Property

Ready to spend some time in the sunshine, or ski slopes, or the beach? Learn the best way to purchase your second home or vacation property in this course. Discussion will include learning to make owning your second/retirement home a reality. During the class we will also go over the minimum down payments, credit requirements, affordability, and the underwriting criteria needed for your purchase. **THIS IS NOT A CLASS ON BUYING OR RENTING A TIMESHARE.**

Course #	Day	Dates	Time	Loc	Fee	Teacher	Max
R117 - 01	W	3/20 (1 Day)	6:30 - 8:00 p.m.	F.H.S. Rm. 119	\$15 \$10 (Gold Card)	M. Olach	Max 30

How to Sell Your Home for Top Dollar

How do you sell your house for top dollar in this market? Learn real estate sales and marketing strategies to assist you in successfully selling your property. Discussion will include: the market-driving trends; how to do a market analysis; determining the value of your property; getting your home sale-ready; advertising and showing your home; handling an offer; and the basics of the required paperwork. You'll get the insight on appraisals, home inspections, and what to do or not to get your home ready to sell.

Course #	Day	Dates	Time	Loc	Fee	Teacher	Max
R118 - 01	W	4/24 (1 Day)	6:30 - 8:00 p.m.	F.H.S. Rm. 119	\$15 \$10 (Gold Card)	M. Olach	Max 30

Recreation & Fitness

Yoga Stretch

This slow-paced, gentle, yoga stretch class will help you to relax, unwind, and feel better. The class is a perfect way to end the day. We will move through gentle yoga poses, relaxing stretches, and dynamic balancing moves.

- Stretches out tight and overused muscles
- Relaxes the body through breathing techniques and deep stretching
- Balance is improved by engaging in simple yoga poses

Please bring a mat. *Come join us and see how much better you feel.*

Course #	Day	Dates	Time	Loc	Fee	Teacher	Max
F107 - 01	Tu	1/23 - 4/23 (12 Weeks)	7:15 - 8:10 p.m.	C.H.S., Multi- Purpose Rm	\$119 \$109 (Gold Card)	S. Garcia	Max 35

Beginners Yoga

Beginner flow class where both new and experienced yoga enthusiasts are welcome. Come learn some of the most common poses found in a typical practice. This basic practice will loosen joints, help flexibility, and strengthen all major muscle groups. You will also improve your breathing techniques and mental focus. Class will be modified so that you can work out at your own level.

Please bring a mat.

Course #	Day	Dates	Time	Loc	Fee	Teacher	Max
F120 - 01	Tu	1/23 - 4/30 (12 Weeks)	7:00 - 7:55 p.m.	P.H.S., Dance Studio	\$119 \$109 (Gold Card)	S. Garcia	Max 30

Pure Pilates

Are you looking to get lean without using dumbbells, barbells, or working out with heavy bulky equipment? Discover how you can transform your body with Pilates. You will see the results of the long lean look of Pilates even faster. Pilates strengthens muscles as well as improves flexibility, balance and posture. Watch your body tone and transform with each class. **Please bring a mat.**

Course #	Day	Dates	Time	Loc	Fee	Teacher	Max
F130 - 01	Tu	1/23 - 4/23 (12 Weeks)	6:15 - 7:10 p.m.	C.H.S., Multi- Purpose Rm	\$119 \$109 (Gold Card)	S. Garcia	Max 35

adc.d211.org/Adult-Continuing-Education



It is sometimes necessary to make changes in the location, times, or dates of courses. Revisions will be posted to our website.

Yogalaties

This ultimate workout fuses together the best of Barre, Pilates, and yoga classes. The fat-burning format consists of interval training, muscle shaping techniques, and isometric movements. Create a long, lean look using Pilates exercises while you build flat abs and a strong back. Strengthen core muscles to create stronger muscle tone, develop better balance, and become more flexible as you tone up and slim down.

Course #	Day	Dates	Time	Loc	Fee	Teacher	Max
F146 - 01	Th	1/25 - 4/25 (12 Weeks)	6:30 - 7:25 p.m.	C.H.S., Multi-Purpose Rm	\$119 \$109 (Gold Card)	S. Garcia	Max 35



Zumba Fitness

Zumba is a distinctive fusion of Latin and International dance music that combines high energy and motivation music with unique moves and combinations. The routines feature aerobic/fitness interval training with a combination of fast and slow rhythms that tone and sculpt the body. Not only is Zumba fun, but it is easy to do. Come and see for yourself what everyone is talking about.

Course #	Day	Dates	Time	Loc	Fee	Teacher	Max
F151 - 01	M	1/22 - 4/22 (12 Weeks)	6:15 - 7:10 p.m.	C.H.S., Multi-Purpose Rm	\$119 \$109 (Gold Card)	S. Garcia	Max 25
F153 - 01	Sa	1/27 - 4/27 (12 Weeks)	9:00 - 9:55 a.m.	S.H.S. Dance Studio	\$119 \$109 (Gold Card)	S. Garcia	Max 25



Zumba Gold Toning

Zumba Gold Toning® is a fun, low-impact workout, dancing to multi-cultural music, which incorporates all elements of fitness: cardiovascular, muscular conditioning, flexibility, and balance. **Bring two-pound weights (optional), water, and a towel.**

Course #	Day	Dates	Time	Loc	Fee	Teacher	Max
F152 - 01	Th	1/25 - 5/2 (12 Weeks)	6:15 - 7:10 p.m.	P.H.S., Dance Room	\$119 \$109 (Gold Card)	S. Garcia	Max 25

Deep Stretching

This class is for anyone who works at a desk all day, would like to increase their range of motion and flexibility, or would like to relax, unwind, and feel better at the end of the day. The class will focus on stretching the hip flexors, IT bands, hamstrings, shoulders, back, chest and legs. This class also is good for anyone with sciatica, back pain, or injuries. Great for all levels. Please bring a mat.

Course #	Day	Dates	Time	Loc	Fee	Teacher	Max
F181 - 01	Th	1/25 - 4/25 (12 Weeks)	7:30 - 8:25 p.m.	C.H.S., Multi-Purpose Rm	\$119 \$109 (Gold Card)	S. Garcia	Max 35

Co-Ed “Power” Volleyball

This course is designed for the “experienced” person who likes to compete and participate with others. The class will be divided for competitive play each evening, with equal emphasis on fun. A great mix of players for a fun workout. Games will be played using U.S.V.B.A. co-ed rules.

Course #	Day	Dates	Time	Loc	Fee	Teacher	Max
F200 - 01	Th	3/7-5/16 (10 Weeks)	8:00 - 10:00 p.m.	S.H.S., Gym	\$85 \$45 (Gold Card)	J. Kelly	Max 16

Co-Ed Water Polo

The common goals of this class are to learn, improve skills, play effectively, and excel in the sport of water polo. Newcomers are welcome, or if you have experience. The class consists of drills and scrimmages.

Course #	Day	Dates	Time	Loc	Fee	Teacher	Max
F360 - 01	Th	2/1- 4/25 (12 Weeks)	8:30 - 10:00 p.m.	P.H.S., Pool	\$95 \$50 (Gold Card)	J. Grzybek	Max 50

Woodworking

Machine Woodworking – Beginning

For the novice as well as the intermediate woodworker, this course stresses the safe and correct operation of woodworking machinery. Students will acquire skills in using power machinery and/or wood turning while working on their own projects. You will learn project planning, wood preparation, assembly, and finishing techniques. Students are responsible for purchasing their own materials for class projects. Due to storage limitations, student projects must be removed nightly from the woodworking classroom. **Attendance is mandatory for the first three weeks of class due to safety concerns. NO EXCEPTIONS.**

Course #	Day	Dates	Time	Loc	Fee	Teacher	Max
W170 - 01	Tu	1/23 - 4/16 (12 Weeks)	7:00 - 10:00 p.m.	P.H.S. Rm. 152	\$135 \$75 (Gold Card)	R. Jungmann	Max 12

Machine Woodworking – Advanced

Project planning, advanced machine tool operations, and project construction will be the main topics for this class. **Prerequisite: Students must have completed the Beginning Machine Woodworking class in order to have the necessary safety instructions to move into the Advanced Machine Woodworking class.** Students are responsible for purchasing their own materials for class projects. Due to storage limitations, projects must be removed nightly from the woodworking classroom.

Course #	Day	Dates	Time	Loc	Fee	Teacher	Max
W180 - 01	Th	1/25 - 4/18 (12 Weeks)	7:00 - 10:00 p.m.	P.H.S. Rm. 152	\$135 \$75 (Gold Card)	R. Jungmann	Max 15



COMMUNITY OUTREACH PROGRAMS



Alternative High School

Earn a District 211 Diploma!

Classes Meet Monday – Thursday Evenings

6:00 - 10:00 p.m. for 16 Weeks

Eligibility/Application

This program is designed to meet the educational needs of students whose high school education has been interrupted. Graduation requirements are similar to day school. Applicants must be at least 17 years of age. Students who enter the Alternative High School officially withdraw from their day school. Permanent records will remain on file with the Alternative High School. Preliminary registration requires the approval of the student services director, if a current District 211 student. Older students and students new to District 211 may contact the director of continuing education for additional information. Please call (847) 755-6820 with any questions. Childcare available upon request.

Location

Location for the Alternative High School Program is in-person at Hoffman Estates High School, 1100 W. Higgins Rd., Hoffman Estates.

Testing

Testing **MUST** be completed by all students registering for the spring semester, regardless if you have been in the program previously. All testing will be done at Hoffman Estates High School. The testing is a standardized reading test that the state requires of all individuals enrolled in the program. Testing usually takes approximately 1-1.5 hours. Dates of testing will be listed in the registration form online. You **MUST** choose a date to test.

REGISTRATION BEGINS THE WEEK OF DECEMBER 4, 2023

Registration is available online at <https://adc.d211.org/Alternative-HS>.

If you have any questions, please call the Continuing Education Office at 847-755-6820 or email aganas@d211.org.



All classes at this time will be in person at Hoffman Estates High School. The schedule on page 22 may change according to school closures.

Alternative High School General Information - Spring 2024

School Calendar

A mandatory orientation/testing starts the week of December 5, 2023, and Tuesday, January 9, 2024, 6:00 – 9:00 p.m., at HEHS, Room 49 for **ALL NEWLY REGISTERED STUDENTS**. Schedule a time with Mr. Ganas.

Alternative High School **classes begin on TUESDAY, JANUARY 16, 2024**. All classes are **16** weeks in length. The last class will vary depending upon the day of the week the class meets.

	CLASSES BEGIN	CLASSES END
MONDAY	Monday, January 22, 2024	Wednesday, May 8, 2024
TUESDAY	Tuesday, January 16, 2024	Tuesday, May 7, 2024
WEDNESDAY	Wednesday, January 17, 2024	Wednesday, May 1, 2024
TUESDAY & THURSDAY	Tuesday, January 16, 2024	Thursday, May 9, 2024
MONDAY & WEDNESDAY	Wednesday, January 17, 2024	Monday, May 6, 2024

CLASSES WILL NOT MEET
Monday, January 15, 2024
Monday, February 19, 2024
Monday, March 25 - Thursday, March 28, 2024

Finals for Monday-only classes will be given on Monday, May 13, 2024
Finals for Tuesday-only classes will be given on Tuesday, May 7, 2024
Finals for Wednesday-only classes will be given Wednesday, May 8, 2024
Finals for Tuesday/Thursday classes will be given on Thursday, May 9, 2024
Finals for Monday/Wednesday classes will be given on Monday, May 13, 2024

Attendance is **mandatory** the first week of classes and for all final exams.
Loss of course credit results in absences on these days.

Graduation

Scheduled for Wednesday, May 15, 2024 at 7:00 p.m.; HEHS Auditorium.

Emergency Information

We will notify the news media if it is necessary to cancel classes because of inclement weather or an emergency situation. Please check our website at adc.d211.org or listen to one of the local area radio stations. The announcement will be: "Palatine-Schaumburg High School District 211 evening classes have been cancelled." The decision to cancel classes is made by 4:00 p.m. Day school cancellation **DOES NOT** automatically mean night school is cancelled.

Campus Regulations

All District 211 Facilities are tobacco, drug, and alcohol free. The possession and use of these substances on campus is prohibited. District 211 Rules and Regulations are in effect during the operation of the Alternative High School Credit Program.

Office

The Alternative High School office is located in **Room 49**. Please call the office at 847-755-5693. (after 6 p.m.)

English as a Second Language

Free Classes!

Levels range from beginner to advanced. Students will learn reading, writing, speaking, and listening skills with an emphasis on reading. Students are placed into a level and may not choose a level. Children of students are not allowed to attend the class. *Childcare is provided at Higgins Education Center. Classes fill quickly.

Students may not miss more than four classes any semester. New students must attend one of the Orientation dates. Testing dates will be provided through registration and must be completed by



Wednesday, January 24, 2024. Testing will take three hours. Advanced-level students must attend an extra night of testing for reading instruction prior to the first night of class. For more information, visit <https://adc.d211.org/Adult-ESL-Information>. Returning students from Fall 2023, need to only fill out a form in their google classroom.

CONANT HIGH SCHOOL		
Program Orientation	In-person	Wednesday, January 10 or Monday, January 22 at 6:30 p.m. in the Cafeteria
Classes Begin	Monday, January 29	
Classes Held	Mondays and Wednesdays from 6:30 – 9:30 p.m.	
No Classes	February 19, March 25 & 27	
PALATINE HIGH SCHOOL		
Program Orientation	In-person	Thursday, January 11 or January 18 at 6:30 p.m. in the Cafeteria
Classes Begin	Tuesday, January 30	
Classes Held	Tuesdays and Thursdays from 6:30 – 9:30 p.m.	
No Classes	March 26 & 28	
HIGGINS EDUCATION CENTER*		
Mon/Wed Classes Begin	Monday, January 29 from 6:00 – 9:00 p.m.	
Tues/Thurs Classes Begin	Tuesday, January 30 from 6:00 – 9:00 p.m.	
No Classes	February 19, March 25, 26, 27, 28	

*Orientation will not be held at Higgins Education Center. Please attend orientation at Conant or Palatine high schools

*Childcare services available only at Higgins Education Center

Emergency Information



In the event that it is necessary to cancel evening classes because of inclement weather or an emergency situation, information will be available on the District 211 website (adc.d211.org), via the new media. Day school cancellation **DOES NOT** automatically mean night school is cancelled.

ESL Conversation Café*

*As shown on page 14

Course #	Day	Dates	Time	Loc	Fee	Teacher	Max
L205 - 01	Sat	2/10 - 3/16 (5 Weeks)	9:30 - 11:00 a.m.	F.H.S. PCR	\$40	J. Frost	Max 12

District 211

College and Career Preparation Classes



Registration for all classes will begin online in December. There will be three orientations with in-person registrations held at Conant High School and Palatine High School on the same nights as ESL. Both Orientations are held in the school cafeteria. You can get help with registration on those evenings as well. During registration, you will choose a date to come in and test in December or January. Classes will begin at the end of January. Need help? Email Julie Frost at jfrost@d211.org or text her at 331-444-2766.

College and Career Ready Classes

Adult Basic Education helps students increase employability skills in reading, math and digital literacy skills for transition into high-demand jobs or post-secondary education. We aim to get students college ready by teaching valued work skills as Critical Thinking, Information Technology Applications, Career Management, Resume Development, Soft Skills, Teamwork, Exploring Career Pathways, presentational skills and interviewing techniques. Students will explore a career by learning about the skills needed, personality traits, the starting salary, and the range of stackable credentials you can earn. You will learn about the job growth and the demand for the job in this area. Guest speakers are invited to attend.

Classes are online for 13 weeks on Mondays/Wednesdays from 6:30 p.m. to 9:30 p.m. via Zoom.

Bridge to Healthcare Careers

In this class you will explore the various healthcare careers. You will learn about the skills, the personality traits, and the training requirements needed. Valued work skills are taught such as Critical Thinking, Information Technology Applications, Career Management, Resume Development, Soft Skill, Teamwork, Exploring Career Pathways, Presentational Skills and Interviewing Techniques. Students will explore a career learning about the skills needed, personality traits, the starting salary, and the range of stackable credentials you can earn. You will learn about the job growth and the demand for the job in this area.

Class is online for 14 weeks on Tuesday nights from 6:00 p.m. to 10:00 p.m. via Zoom.

Support class for Medical Assistant I-CAPS 2

Students are required to enroll in a post-secondary tuition program to be in this class. We provide a free support class for Northwest Suburban College in Rolling Meadows. You will attend college there and co-enroll in our free support class to help you study for your credential exams, while improving your math and reading (which will be needed for stackable credentials in post-secondary education). This class will be online or in person at the college. The support class will run on Tuesdays before or after the Northwest Suburban Class. It is offered from 1:30 to 5:30 p.m.

District 214

Preparation and Credential Classes

Reading 101

Read with understanding and fluency. Write clearly and build your vocabulary.

Location: Forest View Educational Center. | 2121 S. Goebbert Road, Arlington Heights, 60005

Classes (13 weeks): Classes are in-person Thursday mornings from 9:00 a.m. - 12:00 p.m.

Students must be co-enrolled in another District 214 Adult Education class to be eligible.

Contact information: Nicol Engel at 847-718-7953 or email nicol.engel@d214.org.

Writing 101

Location: Forest View Educational Center. | 2121 S. Goebbert Road, Arlington Heights, 60005

Classes (13 weeks): Classes are in-person Thursday mornings from 9:00 a.m. - 12:00 p.m.

Students must be co-enrolled in another District 214 Adult Education class to be eligible.

Contact information: Nicol Engel at 847-718-7953 or email nicol.engel@d214.org.

Support class for Pharmacy Technician I-CAPS 2

Students are required to enroll in a post-secondary tuition program to be in this class. We provide a free support class for Northwest Suburban College in Rolling Meadows. You will attend a college there and you can co-enroll in our free support class to help you study for your credential exams, while improving your math and reading (which will be needed for stackable credentials in post-secondary education). This class will be online or in person at the college. The college class (which is a mixture of in-person and online) are on Mondays, Wednesdays and Thursdays with the support class being online on Tuesdays. The support class begins in January.

Bridge to Manufacturing

In this class you will explore the many possible careers in manufacturing, including the skills and requirements for credentials. You will learn the starting salaries and the range of stackable credentials you can earn, as well as where these can be found. You will also learn about the job growth and demand of these jobs in this area. Guest speakers are invited to attend. This class is online on Thursday evenings from 6:00 - 10:00 p.m. for 14 weeks starting in January. This class will lead to a credential program that we provide for free or to a local college.

Manufacturing Career Pathway, I-CAPS 2 (in person and online)

Students will attend classes on the pathway curriculum, and be provided an additional support class. This support class will be a lab class that aims to improve reading, vocabulary and math skills. Students will then take tests for National Institute of Metalworking Skills (NIMS), Quality Control (Measurements, Materials and Safety), and obtain NIMS Lathe and Mill credentials, and HAAS credentials for Lathe and Mill at the end of two semesters.

Location: Wheeling High School and online.

Registration: See website: <https://www.ce.d214.org/career-pathways>.

Classes (16 weeks): Beginning in January, three evenings from 6:30 - 9:30 p.m.

To determine if you qualify or for more information contact Julie Frost through email julie.frost@d214.org.



High School District 214 Illinois High School Equivalency Preparation Classes

FREE! — Spring 2024

Please check the Adult Education website now for Student Orientation, class registration and more information. <https://ce.d214.org/adulted>.

Illinois High School Equivalency Certificate

We will prepare you to take the GED® Computer-Based Test.

Location: Forest View Educational Center 2121 S. Goebbert Road, Arlington Heights 60005.

Classes (13 weeks): All classes meet on Tuesday, Wednesday, and Thursday evenings from 6:00 – 9:00 p.m. and Monday, Tuesday and Wednesday mornings from 9:00 a.m. - 12:00 p.m.

Contact information: Nicol Engel at 847-718-7953 or nicol.engel@d214.org.

Spanish GED®

Clases de preparación para el examen de GED® en español

Certificado de Equivalencia de la Educación Preparatoria

Para determinar si usted califica para tomar la clase de preparación de GED® en español, tendrá que hacer un examen antes de que comience la clase. Este examen se hará el día de las inscripciones y tendrá una duración de 3 horas.

Locación: Forest View Educational Center (¡No hay cuidado de niños!).

Clases: martes y jueves de 6:00 - 9:00 p.m.

Para más información, llame o mande un mensaje por correo electrónico a Carinna Tello 847-718-7722; o email carinna.tello@d214.org.



High School Equivalency (HSE) Certificate (Formerly GED)

***HSE Preparation classes are available through
Harper College (847-925-6223) and
Township High School District 214 (847-718-7953).***

General Information

Persons who pass the High School Equivalency (HSE) tests receive official high school equivalency certifications. If you have not earned your high school diploma, you can earn an HSE certificate by passing an HSE test. The HSE certificate is recognized as equivalent to a high school diploma in civil service, business and industry, and by many colleges. Tests are given at several locations throughout the suburban area, including Harper College.

Eligibility

An individual is eligible to take the HSE test given they meet the following HSE guidelines: 17 years of age or older, is not a high school graduate or an HSE graduate, and has maintained residence in the State of Illinois for 30 days. If an individual is 16 years of age and has been enrolled in a public, private, or a home school setting in the last 12 months, they must present a withdrawal letter from the last school enrolled before taking the HSE test.

Course Information

The Adult Educational Development Department (AED) at Harper College offers Basic Skills, Pre-HSE, HSE, and HSE on-line classes. Classes are offered free of charge through support of federal and state grant funds. To enroll for classes, persons need to attend an HSE information session. Information about the next sessions can be found at <https://www.harpercollege.edu/academics/aed/index.php>.



Information sessions are offered at:

Harper Campus (Main Campus)
1200 W. Algonquin Road, Palatine
(847) 925-6223

Harper College Learning and Career Center
1375 S. Wolf Road, Prospect Heights
(847) 925-6001

AED classes are offered at four locations: Harper College Main Campus in Palatine; Harper Learning and Career Center in Prospect Heights; Education & Workforce Center in Hanover Park; and the Harper Partners for Our Community Center in Palatine. Classes meet for eight weeks in the morning or evening. Review of social studies, science, writing skills, literature, and mathematics are conducted, along with preparation for the U.S. and Illinois Constitution Test.

Free Adult Reading Classes

Township High School District 214 Community Education
Read to Learn Adult Literacy/Volunteer Program



Spring 2024 Schedule

Trained volunteer tutors implement prepared lesson plans for English-speaking adult learners in a one-to-one instructional setting.

STUDENTS: Go to ce.d214.org/readtolearn to pre-register for the site you wish to attend. You may register for one location only. In addition, all new students and any returning students NOT enrolled in Fall 2023 classes are required to test. You must go to one of the sites below on the date and time listed

Class Dates	Class Locations	Class Times
Mon., Feb. 5 – Apr. 22	Schaumburg Township District Library <i>(Testing for new students January 22)</i>	9:30 a.m. - 12:00 noon
Mon., Feb. 5 – Apr. 22	Our Saviour's Lutheran Church <i>(Testing for new students January 22)</i>	9:30 a.m. - 12:00 noon
Tues., Feb. 6 – Apr. 30	Arlington Heights Memorial Library <i>(Testing for new students January 23)</i>	9:30 a.m. - 12:00 noon
Tues., Feb. 6 – Apr. 16	Prince of Peace Lutheran Church (Schaumburg) <i>(Testing for new students January 23)</i>	12:30 p.m. - 3:00 p.m.
Wed., Feb. 7 – Apr. 17	Indian Trails Public Library <i>(Testing for new students January 24)</i>	9:30 a.m. - 12:00 noon
Wed., Feb. 7 – Apr. 17	Schaumburg Township District Library <i>(Testing for new students January 24)</i>	9:30 a.m. - 12:00 noon
Wed., Feb. 7 – Apr. 17	Elk Grove Village Public Library <i>(Testing for new students January 24)</i>	9:00 a.m. - 11:30 a.m.
Wed., Feb. 7 – April 24	Arlington Heights Memorial Library <i>(Testing for new students January 24)</i>	6:30 p.m. - 9:00 p.m.
Thurs., Feb. 8 – Apr. 18	Forest View Educational Center <i>(Testing for new students January 25)</i>	9:30 a.m. - 12:00 noon
Thurs., Feb. 8 – Apr. 25	Rolling Meadows High School Library <i>(Testing for new students January 25)</i>	7:00 p.m. - 9:30 p.m.
Fri., Feb. 9 – April 26	Mount Prospect Public Library <i>(Testing for new students January 26)</i>	9:30 a.m. - 12:00 noon

Instructions

For students who attended classes in Fall 2023

- Pre-register for class at the website given below or use the QR code. You **do not** have to test.

For new students or returning students NOT enrolled in Fall 2023

- Pre-register at the website given below or use the QR code.
- Go to class on the testing date listed at the class time.
- **BE ON TIME!** Testing takes the full 2.5 hours

For more information, go to ce.d214.org/readtolearn or call **847-718-7724**



This project is made possible by a grant awarded by the Illinois State Library (ISL), a division of the Office of Secretary of State, using funds designated for literacy.

Schaumburg Township District Library

Schaumburg Township District Library serves the 130,000 residents of Schaumburg Township, including portions of Elk Grove Village, Hanover Park, Hoffman Estates, Roselle, Schaumburg and Streamwood. Each year, more than 1 million visitors come to the Schaumburg Library's three branches. In addition to more than 500,000 books, DVDs, CDs, eBooks and more items available for checkout, the Schaumburg Library has a 24-7 virtual branch at <http://www.schaumburglibrary.org> where you can view your account, download digital services, conduct digital research and more. Dozens of programs are offered each month for all ages and interests, giving you educational, entertaining, hands-on experiences that allow you to connect with your family, friends, and neighbors.



[schaumburglibrary.org](http://www.schaumburglibrary.org) where you can view your account, download digital services, conduct digital research and more. Dozens of programs are offered each month for all ages and interests, giving you educational, entertaining, hands-on experiences that allow you to connect with your family, friends, and neighbors.

**Central Library, 130 S. Roselle Road;
(847) 985-4000**

Mon.-Thurs. 9:00 a.m. - 9:00 p.m.
Fri. & Sat. 9:00 a.m. - 7:00 p.m.
Sun. Noon - 5:00 p.m.

**Hoffman Estates Branch,
1550 Hassell Road; (847) 885-3511**

Mon.-Thurs. 10:00 a.m. - 9:00 p.m.
Fri. & Sat. 10:00 a.m. - 7:00 p.m.
Sun. Closed

**Hanover Park Branch, 1266 Irving Park Road;
(630) 372-7800**

Mon.-Thurs. 10:00 a.m. - 9:00 p.m.
Fri. & Sat. 10:00 a.m. - 7:00 p.m.
Sun. Closed

Palatine Public Library District

Palatine Library is your hub for learning, entertainment, and community. At the Main Library and its Branches, you can gain access to hundreds of thousands of books, audiobooks, eBooks, music, television shows and more. You can also use computers with Internet access and free Wi-Fi, and access various subscription-based online resources. The Workshop has a lab with brand new, state-of-the-art equipment and a revitalized lab that is designed for you to explore,



build, and create your own professional, school, and personal projects. Get a Library card to take advantage of everything the library has to offer.

Visit <http://www.palatinelibrary.org> for more information.

**Main Library, 700 N. North Court, Palatine;
(847) 907-3600**

Mon.-Thurs. 9:00 a.m. - 9:00 p.m.
Fri. 9:00 a.m. - 6:00 p.m.
Sat. 9:00 a.m. - 5:00 p.m.
Sun. Noon - 5:00 p.m.

**Rand Road Branch Library, Community
Resource Center, 1585 Rand Road, Palatine;
(847) 202-1194**

Mon.-Thurs. 10:00 a.m. - 6:00 p.m.
Fri. 9:00 a.m. - 4:00 p.m.
Sat. 9:00 a.m. - 1:00 p.m.
Sun. Closed

**North Hoffman Branch Library, Willow
Recreation Center, 3600 Lexington Drive,
Hoffman Estates; (847) 934-0220**

Mon.-Thurs. 11:00 a.m. - 7:00 p.m.
Fri. 10:00 a.m. - 6:00 p.m.
Sat. 9:00 a.m. - 1:00 p.m.
Sun. Closed



U.S. Citizenship Test Preparation

If you are a permanent resident, consider applying for American citizenship. We can help you to become an American citizen. Citizenship Test Preparation classes are free. Please bring your green card to registration.

Registration

Registration starts in January in Building C, enter through door #30. To sign-up for in-person registration and testing go to: <https://www.ce.d214.org/citizenship>.



January 16 and 18, 9:00 a.m.*

Forest View Educational Center
2121 S. Goebbert Road, Arlington Heights
Classes meet Tues. & Thurs. at 9:00 a.m. - 12:00 p.m.

**Childcare is available*

January 17 and 22, 6:00 p.m.*

Forest View Educational Center*
2121 S. Goebbert Road, Arlington Heights
Classes meet Mon. & Wed. at 6:00 - 9:00 p.m.

**Childcare is available*

January 16 and 18, 6:00 p.m.

Class conducted in English and Polish
Forest View Educational Center*
2121 S. Goebbert Road, Arlington Heights
Classes meet Tues. & Thurs. at 6:00 - 9:00 p.m.

January 16 and 18, 6:00 p.m.

Class conducted in English
Forest View Educational Center*
2121 S. Goebbert Road, Arlington Heights
Classes meet Tues. & Thurs. at 6:00 - 9:00 p.m.

January 13, 9:00 a.m.

Class conducted in English only
Forest View Educational Center*
2121 S. Goebbert Road, Arlington Heights
Class meet Sat. at 9:00 a.m. - 2:00 p.m.

January 13, 9:00 a.m.

Class conducted in English and Polish
Forest View Educational Center*
2121 S. Goebbert Road, Arlington Heights
Class meets Sat. at 9:00 a.m. - 2:00 p.m.

January 13, 9:00 a.m.

Class conducted in English, Ukrainian & Russian
Forest View Educational Center*
2121 S. Goebbert Road, Arlington Heights
Class meets Sat. at 9:00 a.m. - 2:00 p.m.

January 13, 9:00 a.m.

Class conducted in English and Spanish
Forest View Educational Center*
2121 S. Goebbert Road, Arlington Heights
Class meets Sat. at 9:00 a.m. - 2:00 p.m.

February 29, 5:45 p.m.

Schaumburg Township District Library,
130 S. Roselle Road, Schaumburg
Classes meet Mon. & Thurs. at 5:45 - 8:45 p.m.

March 2, 9:00 a.m.

Hoffman Estates Branch Library
1550 Hassell Road, Hoffman Estates
Classes meet Sat. at 9:00 a.m. - 2:00 p.m.

***All Forest View Educational Center classes are held in Building C, Door #30**

For more info contact Ewa Crowe at 847-718-7730 or ewa.crowe@d214.org
Monica Molina at 847-718-7911 or monica.molina@d214.org



The District 214 Community Education Adult Education and Family Literacy Program is supported in part by the Illinois Community College Board, which includes federal funds totaling \$393,071. Approximately 1% (\$14,500) of this program is supported with non-government sources. The U.S. Citizenship Preparation Program is funded in part by the Illinois Department of Human Services. The Schaumburg Township District Library supports classes offered at that location. No federal funds support the U.S. Citizenship Preparation classes.

Hoffman Estates Celebrates Golden Anniversary

50 YEARS

On October 21, 1973, Township High School High School District 211 opened its fifth high school in Hoffman Estates. The first students to fill the halls of Hoffman Estates High School were freshmen and sophomores. The school would hold its first graduation in 1976.

During the 23-24 school year, Hoffman Estates High School is celebrating its golden anniversary. The celebration kicked off August 18 in the stadium with performances by various school groups including the Hawk Marching Band and Orange Crush. Celebrations continued when hundreds of alumni joined students in the stadium for homecoming in mid-September. On October 20, students participated in a school-wide birthday celebration to mark the anniversary of the building's first day of operations.

Over the past half-century, Hoffman Estates High School has marked multiple achievements, including receiving the U.S. Department of Education Blue Ribbon Award of Excellence – and, this year, another “Exemplary” rating from the State of Illinois on the school report cards.

The school counts CBS 2 Director of Engineering Tom Schneck, actors Sherri Shephard, Todd Stashwick, and athletes Sal Fasano, Al Levine, Eric Saubert, and Ken and Steve Snow among its alumni.



Hundreds attend **First Generation College Event**

District 211's First Generation College Workshop was held at Palatine High School October 17, marking the event's first return to an all in-person event since the COVID-19 pandemic.

Counselors and administrators from across District 211, as well as representatives from Harper College, the Illinois Student Assistance Commission, and other local colleges, discussed topics ranging from the college application process to applying for financial aid. The workshop is focused on juniors and seniors who may be the first in their family to navigate the collegiate application process.

The First Generation College Workshop is part of a series of events hosted by District 211 to help prepare all students for post-secondary life. Other events include District 211 College Night, the Directions College and Career Fair for those with special needs, and the Senior Job Fair for students planning to launch their career immediately following high school graduation.



Benefiting our Students with a donation of \$75,000

A Palatine High School program that inspires and empowers first-generation college students has received a \$75,000 lift from a donor through the District 211 Education Foundation.

Project Excel, which enrolls about 350 students annually at Palatine, takes students on college field trips, works with them on college applications, discusses opportunities for the future and makes sure the selected students – all with high potential who can benefit from the additional services – are aware of their postsecondary options and supported in the process.

The new donation, the largest ever received, will allow the program to take a significant step forward, offering summer immersive learning opportunities on college campuses, extended field trips with students interacting with Palatine alumni at major universities, and weekend sessions

that provide additional SAT and other tutoring both in group sessions and one-on-one sessions. Students also will receive nice clothing for college and job interviews.

“These students come to us sometimes skeptical of the program, but always leave ready to make big things happen,” said Alonso Ramirez, the program’s lead teacher and adviser. “Our mission is to believe in them more than they believe in themselves, and to inspire them so they know anything is possible.”

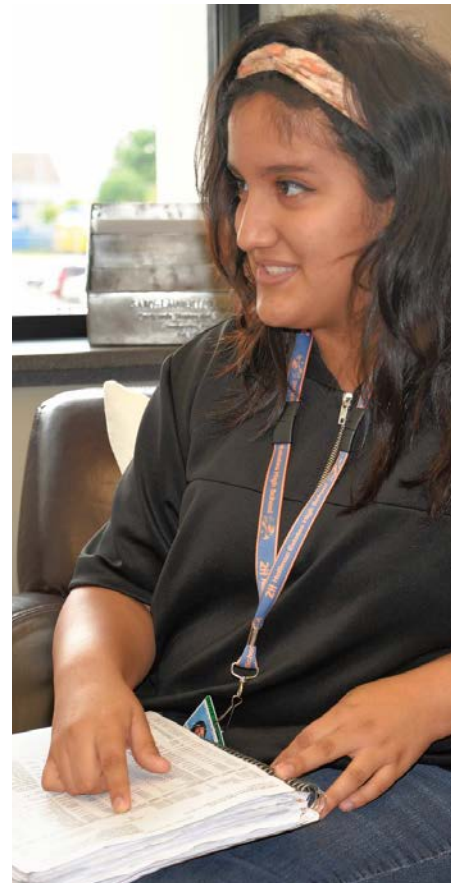
The donation came from the Spirit Cultural Exchange via Rich Baader, a businessman who had come to know through his work young local graduates with significant drive and potential who hadn’t fully taken advantage of the postsecondary experiences Palatine High School offers.

His interest was in ensuring those with a hard work ethic and grit were fully exposed to all opportunities under the guidance of teachers and counselors, and Project Excel was an ideal fit.

“This world needs leaders,” Baader said, “and that is exactly what this program is creating.”

Principal Tony Medina says Project Excel helps level the playing field, making sure all are able to see the opportunities and experiences for college and career readiness once they graduate.

The program has been part of Palatine High School since 2008. Typically, 100 percent of its students – nearly all of them the first in their family to go to college – are accepted to a two- or four-year college. Other opportunities for postsecondary success also are presented.



Hoffman Estates High School also offers Project Excel, again using it as an opportunity to build even greater successes for first-generation students who may just need a little more support.

The District 211 Education Foundation works to build success and growth opportunities for all students through scholarships, programming and supportive resources. For more information on the Foundation or to make a donation or create a scholarship, contact 847-755-6631.





TOWNSHIP HIGH SCHOOL DISTRICT 211

Non-Profit Organization U.S. Postage PAID Schaumburg, IL Permit No. 125

Continuing Education

1750 South Roselle Road

Palatine, Illinois 60067-7336

Telephone: (847) 755-6820

adc.d211.org

UNITED STATES DEPARTMENT OF EDUCATION
BLUE RIBBON SCHOOLS OF EXCELLENCE

Palatine

High School

1111 North Rohlwing Road

Palatine, IL 60074-3777

(847) 755-1600

phs.d211.org

Schaumburg

High School

1100 West Schaumburg Road

Schaumburg, IL 60194-4150

(847) 755-4600

shs.d211.org

William Fremd

High School

1000 South Quentin Road

Palatine, IL 60067-7018

(847) 755-2600

fhs.d211.org

Hoffman Estates

High School

1100 West Higgins Road

Hoffman Estates, IL 60169-4050

(847) 755-5600

hehs.d211.org

James B. Conant

High School

700 East Cougar Trail

Hoffman Estates, IL 60169-3659

(847) 755-3600

chs.d211.org

G.A. McElroy

Administration Center

1750 South Roselle Road

Palatine, IL 60067-7336

(847) 755-6600

adc.d211.org